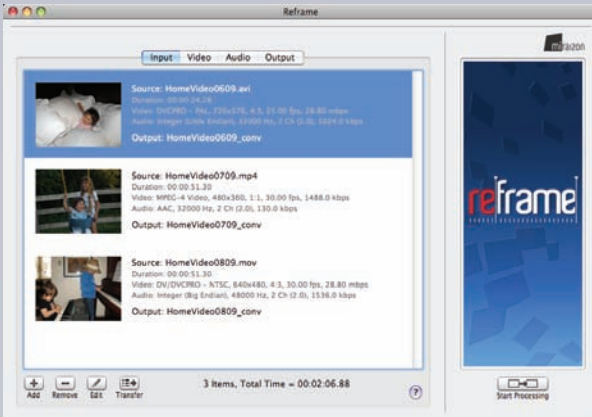




## High-Quality Video Standards Converter

Reframe lets you convert between PAL and NTSC video, SD and HD video, or from film to video. It also converts video and audio among formats including: MOV, AVI, MP4, MPG, M4V, DV, WAV, AIF, and many others.

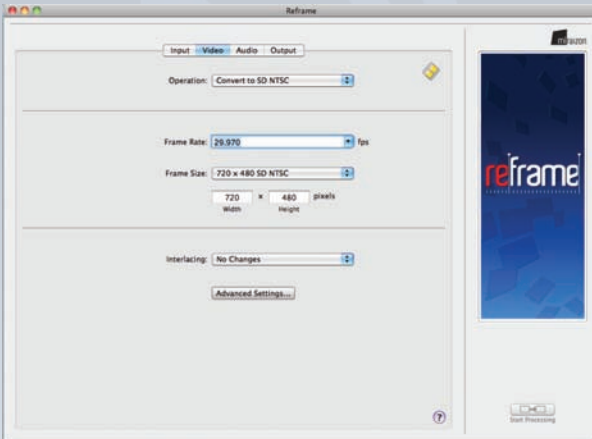
### STEP 1: Add Your Movie, Video, or Audio Clips to the Input List



The Input Tab

- Add as many movie, video, and audio clips as you like to the Input List for batch processing
- Add movie, video, and audio clips in a variety of formats to the Input List
- View the auto-detected properties (e.g. video frame size, video frame rate, audio sampling rate, audio sample size, etc.) of each input clip
- Edit the properties of each input clip as necessary
- Choose an output file name for each input clip
- Organize the input clips in your preferred order if combining the clips into a single output file
- Save the Input List and load it in again later for reuse
- Easily copy the properties of an input clip to the Video and Audio tabs as a starting point for conversions

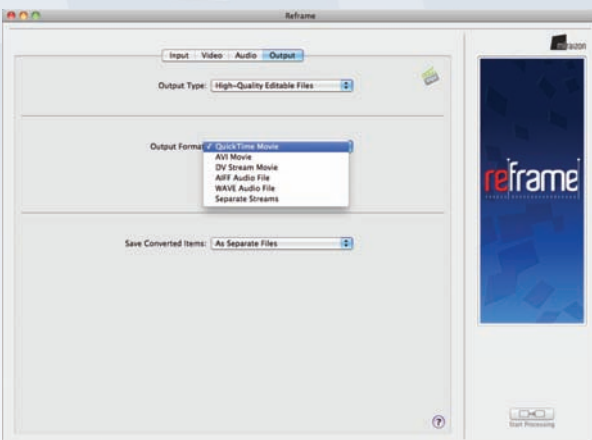
### STEP 2: Select the Conversion Options for Video and Audio



The Video Tab

- Select among the pre-defined video operation settings to effortlessly set the best frame size and frame rate for your video conversion goals
- Custom-define video frame sizes and frame rate settings to meet your conversion goals
- Select among video interlacing options such as high quality de-interlacing with motion compensation and field order reversal
- Use the Video Advanced settings window to further fine-tune your video conversion operation
- Select among the pre-defined audio operation settings to effortlessly set the best sampling rate and sampling size for your audio conversion goals
- Custom-define the audio sampling rate and sampling size
- Select the volume gain option to adjust the audio volume
- Save your video and audio settings and load them later for reuse

### STEP 3: Select the Output Options and Start the Conversion Process



The Output Tab

- Select among the pre-defined Output Types to find a category that matches your conversion goals and to narrow down the best output format options
- Select among a variety of output file formats to find the one that best meets your needs
- Combine all the Input List clips into one output file, or save them all out separately
- Use the QuickTime Options window to choose whether to save a self-contained or reference movie, and whether or not to include playback aspect ratio information
- Use the Advanced Export type to output using any QuickTime movie Export component installed on your machine
- Custom-configure any available options for your Advanced Export output format to fine-tune the final output



# High-Quality Video Standards Converter

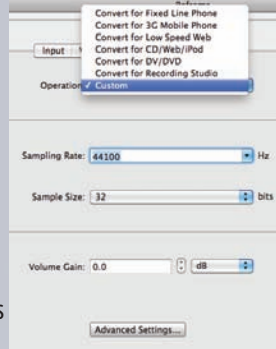
## Ease-of-Use. Advanced Features. High Quality.

Reframe continues Miraizon's signature combination of ease-of use with advanced features and high quality.

### Ease of Use

The intuitive user interface in Reframe makes it very easy to do your video and audio conversions. Once you select a pre-defined operation that best suits your goals, Reframe automatically chooses the best video and audio settings for you to enable quick and easy conversion.

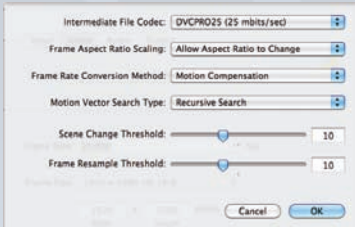
Reframe also provides pre-defined Output Type categories so you can narrow down the best output format for your needs.



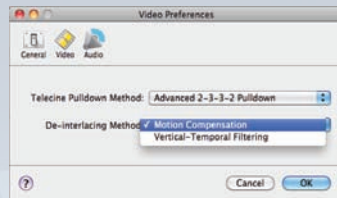
The Audio Tab with a list of pre-defined operations

### Advanced Features

The simple user interface in Reframe hides the many advanced features available for professional users. It is easy to fine-tune video and audio settings by selecting "custom" options. For video, users can access an Advanced Settings window to adjust such settings as the Frame Rate Conversion Method and the Motion Vector Search Type. For audio, an Advanced Settings window allows adjusting such settings as the Resampling Precision. Preferences windows provide additional advanced options such as the Telecine Pulldown method and the De-interlacing Method for Video. For output, Advanced Export output options are available as well to customize QuickTime Export Component settings.



The Video Advanced Settings Window



The Video Preferences Window

### Quality

Reframe utilizes advanced technologies to produce the best quality video and audio. High quality polyphase filters and motion compensation are used to produce optimal frame size and frame rate conversion results. Cascaded high-order filters and optional double-precision calculations produce superior quality audio resampling and gain adjustment.

## Input Formats

### Supported Input Movie File Formats

- MPEG-1 movie files (.mpg)
- MPEG-2 movie files (.mpg, program stream only)
- MPEG-4 movie files (.mp4, .m4v)
- QuickTime movie files (.mov)
- DV Stream files (.dv)
- AVI movie files (.avi) [only codecs supported by QuickTime]
- Any movie file supported by QuickTime

### Supported Input Video File Formats

- MPEG-1 video files (.m1v)
- MPEG-2 video files (.m2v)
- MPEG-4 video files (.mp4 or .m4v)
- Any video stream file supported by QuickTime

### Supported Input Audio File Formats

- AIFF files (.aif or .aiff)
- WAVE files (.wav)
- MPEG-1 audio files (.mp1, .mp2, .mp3, .m1a)
- MPEG-2 audio files (.m2a, layer III stereo only)
- Dolby Digital AC-3 audio files (.ac3)
- MPEG-4 AAC audio files (.aac, .m4a)
- Any audio stream file supported by QuickTime

## Output Formats

### Supported Output Movie/Video/Audio File Formats

- QuickTime files (.mov, with any available codecs supported by QuickTime)
- AVI files (.avi)
- DV Stream files (.dv)
- MPEG-4 files (.mp4)
- H.264 files (.mp4, .m4v)
- Apple TV Movie files (.m4v)
- iPhone Movie files (.m4v)
- iPod Movie files (.m4v)
- 3GP Phone Movie files (.3gp)
- All standard QuickTime movie export formats
- All user-installed QuickTime movie export formats

### Supported Output Audio Only File Formats

- AIFF files (.aif or .aiff)
- WAVE files (.wav)

## System Requirements

### For both Macintosh and Windows:

- 512 MB of RAM minimum
- QuickTime 7.2 or later
- 20 MB minimum of free hard drive space
- A CD-ROM or DVD-ROM drive

### For Macintosh:

- A Macintosh with an Intel Core or later processor, or a G3 or later PowerPC processor
- Mac OS X 10.4 or later

### For Windows:

- A Pentium 4 processor or equivalent, minimum
- Intel Core Duo, AMD Athlon XP, or better processor recommended
- Windows XP (SP2 or higher), Vista, or Windows 7
- A Super VGA (800 x 600) resolution monitor minimum
- An XGA (1024 x 768) or higher resolution monitor recommended
- A video card supporting 256 colors minimum, with at least 16 MB of video RAM
- OpenGL 1.2 or higher graphics support



www.miraizon.com  
sales@miraizon.com